

Magna SS Twin 1250/4/100



The Magna SS Twin 1250/4/100 is a fully automatic floor mounted pumping station offering dual horizontally-mounted dry well pumps and a robust 1250 litre stainless steel chamber.

The system is suitable for pumping both foul and storm water to a higher level when gravity drainage is not possible and/or economical to install.

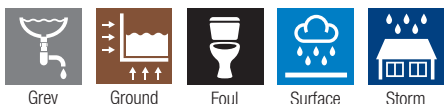
Manufactured in robust stainless steel with ductile iron pipe work the MagnaSS Twin combines top level aesthetics with hard wearing durability making it ideal for demanding commercial installation.

The system is supplied with a DN100 outlet and features pumps with vortex impellers. The control panel upstand also ensures the system can be installed in as compact an area as possible. The system is only suitable for three phase power.

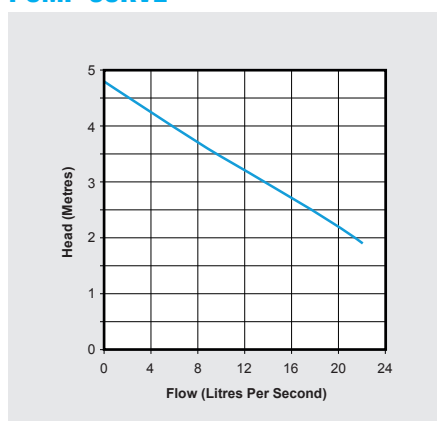
KEY FEATURES

- 1250 litre storage capacity
- Robust stainless steel chamber system
- Twin horizontally mounted vortex pumps
- DN100 outlet connection
- Space-saving control panel upstand
- Bespoke systems available contact our sales team to discuss your project

WASTE TYPE



PUMP CURVE



TECHNICAL DATA

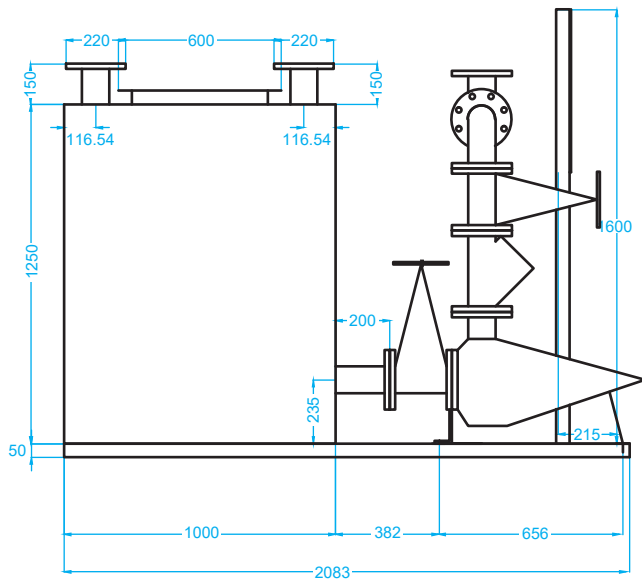
MAGNA SS 1250/4/100	
Number of pumps	2
Power supply	400 VAC 50 Hz ~3
Impellor type	Vortex
Starting current	25.2 A
Starting torque	37.3 Nm
Rated current	3.6 A
Rated torque	12.8 Nm
Motor rating	1300 W
Frequency	50 Hz
Revolutions per min.	980 rpm
Max vertical output	4 m
Max flow rate	22 l/s
Free passage	75 mm
Input size	DN100
Discharge size	DN100
Tank capacity	1250 litres
Tank material	Stainless steel
Lifting eyes	2no
Level control type	Probes
Number of level controls	5no
CONTROL PANEL	
Enclosure	Metal, IP54
Volt-free contact	Yes, common fault
Voltage	400 VAC 50 Hz ~3
Volted contact	24 V
Dimensions W x H x L	400 mm x 500 mm x 210 mm

All our products can be customised to your requirements. For more information and advice please call our Sales Team on 01442 211554.

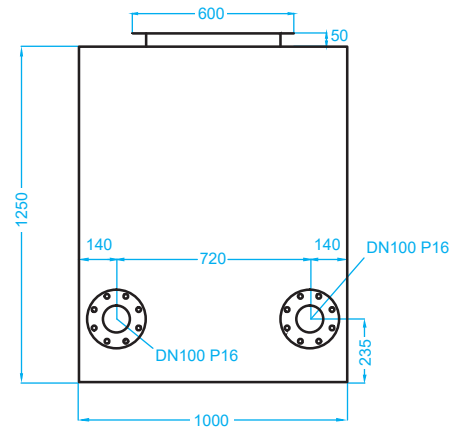
Magna SS Twin 1250/4/100

DIMENSIONS (mm)

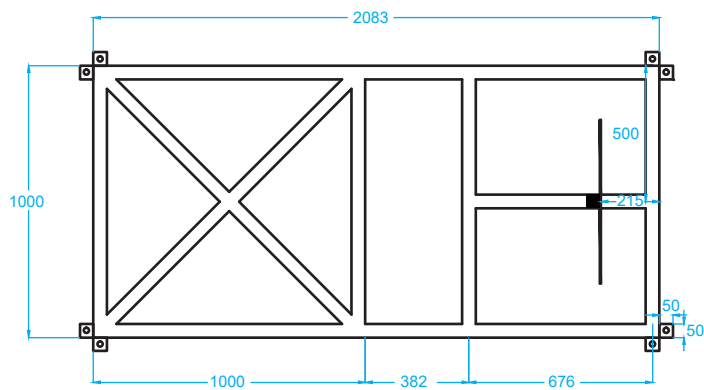
SIDE ELEVATION



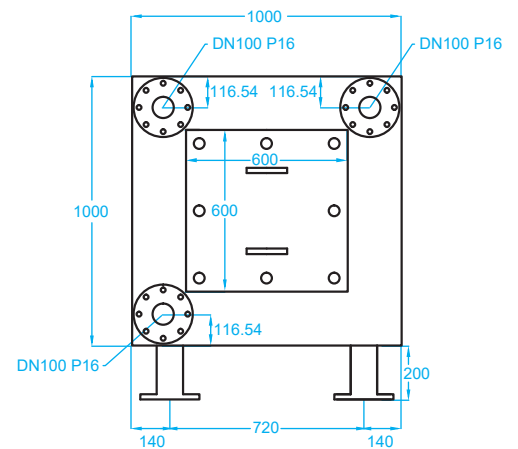
FRONT OF CHAMBER



FRAME



TOP OF CHAMBER



DELIVERING PUMPED AND DRAINAGE SOLUTIONS FOR OVER 30 YEARS

Packaged pumping stations

Waste water pumping systems

Macerators and macerating toilets

Floor mounted pumping stations

Fat, oil and grease separating systems

Rainwater harvesting systems

Battery backup systems

Adoptable pumping stations

Submersible pumps

Accessories



We provide pumped and drainage products and services to the public and private sectors including residential, commercial, hospitality and retail. We are proud of the long-term relationships we have built with clients and partners, delivering cost effective, robust and dependable products and services.

PROJECT SERVICES

- Project design
- Site surveys
- Installations
- Refurbishments

AFTERSALES SERVICES

- Planned servicing
- Emergency call outs
- Commissioning
- Monitoring

DRAINAGE SERVICES

- Tankering
- Drain maintenance
- Surveys and investigations
- Repairs

12-MONTH GUARANTEE

Your products are protected by a 12-month guarantee. [Terms and Conditions](#) apply.

HOW TO ORDER

Order online at www.edincare.com

Call Sales on 01442 211554

Email sales@edincare.com

www.edincare.com

- Discover our products and services
- Order products online
- Case studies and articles
- Brochures and technical documents

Protect your property with an Edincare Service Agreement

As with all pumped and drainage systems, regular maintenance is essential to ensure optimum performance and minimal downtime. Our Service Agreements comprises planned preventive maintenance visits at an agreed frequency, we also service other manufacturers' equipment regardless of type, make and age.

- ✓ Validates your building insurance
- ✓ Reduces the risk of failure
- ✓ Increases the life expectancy of your equipment
- ✓ Priority callouts and 24/7 out-of-hours service
- ✓ Reduced rates for emergency call outs
- ✓ Flexible payment options (Direct Debit)



+44 (0)1442 211554
info@edincare.com

www.edincare.com
[edincarepumps](https://www.linkedin.com/company/edincarepumps)

Unit 7, Heron Business Park, Eastman Way,
Hemel Hempstead, Hertfordshire, HP2 7FW

A Tricel Company
www.tricel.ie



Our policy is one of continuous product improvement, we reserve the right to change specifications and prices without prior notice. All information is given in good faith. No responsibility can be accepted for errors, omissions or incorrect assumptions.
© 2025 Omni Pump International Ltd t/a Edincare Pumps & Edincare Drains.