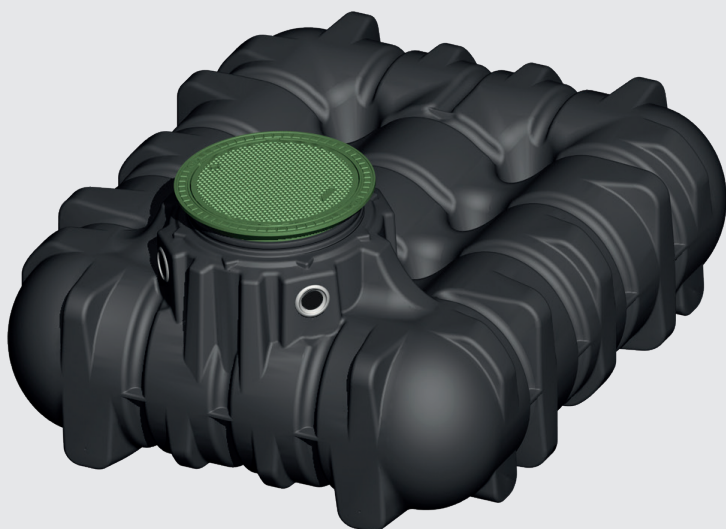


# WaterGuard Flat (Eco) 3000



## KEY FEATURES

- 3,000 litre total storage capacity constructed from 100% recycled polyethylene
- Shallow dig chamber
- Overflow to storm drain or soakaway
- Offers unregulated use of your outdoor tap
- Can also be used on non-potable appliances in the property such as washing machines and WC's
- Mains water top-up panel
- Reduces mains water consumption
- Environmentally-friendly

## WASTE



Storm

WaterGuard Flat (Eco) 3000 is a fully automatic rainwater harvesting system used for the collection and supply of rainwater within both domestic and commercial applications.

It is designed to accept rainwater from downpipes, which is then filtered into a collection tank ready to be used to serve an outdoor tap or for non-potable appliances in the property such as washing machines and WC's.

The system consists of a 100% recycled polyethylene chamber with locking pedestrian duty access cover, connections for all connecting pipework, submersible pump with floating water intake and self-cleansing Minimax Pro filter package complete with overflow syphon and calmed inlet. It also features a fully-automatic mains water top-up panel and float kit to maintain the water level within the chamber during dry spells. It includes 25 m of 25 mm HDPE hose for the discharge line.

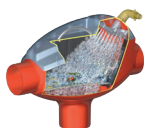
This environmentally-friendly system offers unregulated use of your outdoor tap and also saves money through reduced mains water consumption for domestic appliances.

## INCLUDED

WaterGuard Flat (Eco) 3000 system comes with:

- 3000 litre polyethylene chamber
- Telescopic Dome Shaft 'Mini', pedestrian duty
- Integral Minimax Pro Filter package
- Fully-automatic submersible pump
- Flexible internal pipework
- Fully-automatic mains water top-up panel
- 25 m HDPE hose, 25 mm c/w fittings

**Minimax Pro Filter package**



**Telescopic Dome Shaft 'Mini'**



**Fully-automatic submersible pump**



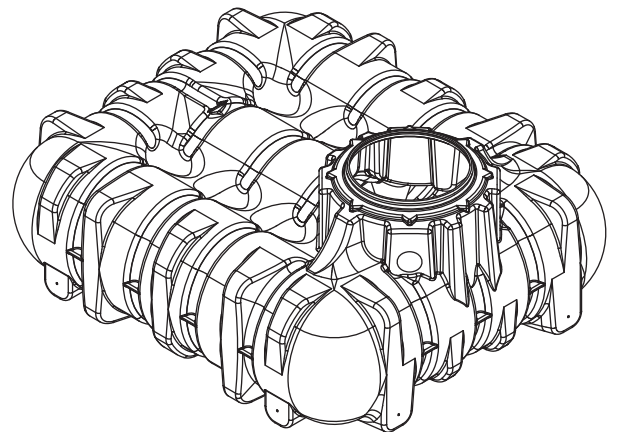
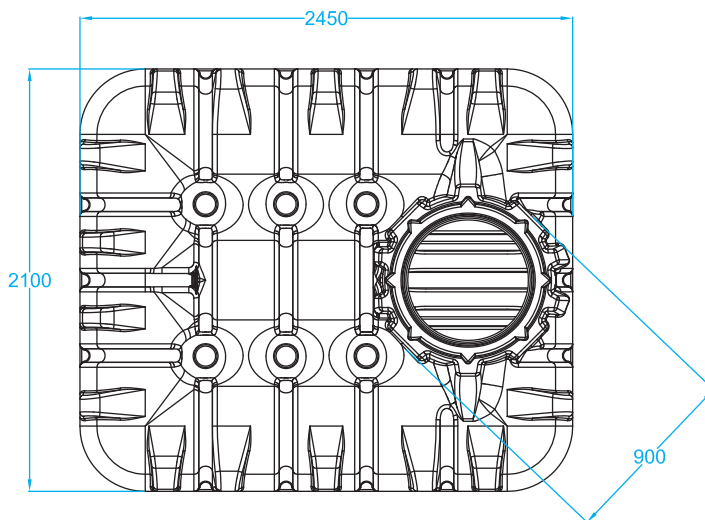
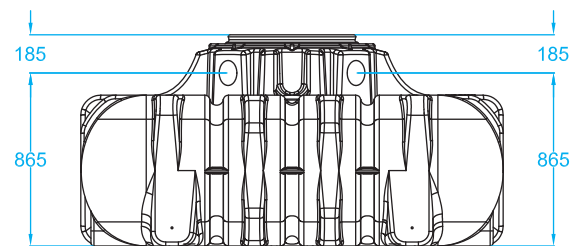
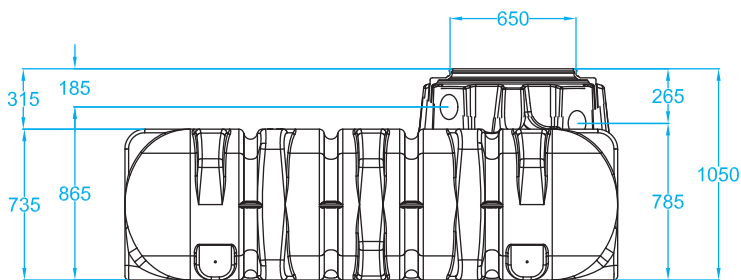
**Mains water top-up panel**



# WaterGuard Flat (Eco) 3000

## CHAMBER SPECIFICATIONS

Inlet diameter	DN 110 (4")
Lifting eyes	No
Maximum storage capacity	3,000 litres
Chamber material	Linear low density polyethylene
Dimensions (L x W x H)	2450 x 2100 x 1050 mm
Chamber weight	180 kg



## DELIVERING PUMPED AND DRAINAGE SOLUTIONS FOR OVER 30 YEARS

Packaged pumping stations

Waste water pumping systems

Macerators and macerating toilets

Floor mounted pumping stations

Fat, oil and grease separating systems

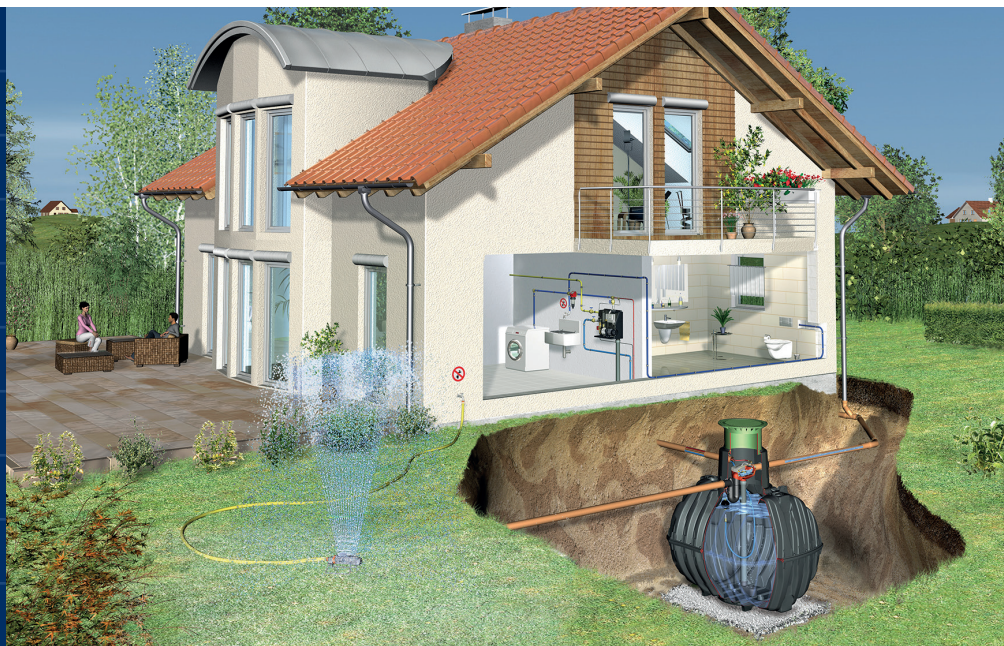
Rainwater harvesting systems

Battery backup systems

Adoptable pumping stations

Submersible pumps

Accessories



We provide pumped and drainage products and services to the public and private sectors, including residential, commercial, hospitality and retail.

We are proud of the long-term relationships we have built with our clients and partners, delivering cost effective, robust and dependable products and services.

### 12-MONTH GUARANTEE

Your products are protected by a 12-month guarantee. Please refer to our Terms and Conditions at [www.edincare.com](http://www.edincare.com)

### HOW TO ORDER

Order online at [www.edincare.com](http://www.edincare.com)  
Call Sales on 01442 211554  
Email [sales@edincare.com](mailto:sales@edincare.com)

### PROJECT SERVICES

- Project design
- Site surveys
- Installations
- Refurbishments

### AFTERSALES SERVICES

- Planned servicing
- Emergency call outs
- Commissioning
- Monitoring

### DRAINAGE SERVICES

- Tankering
- Jetting
- Drainage CCTV
- Surveys
- Cleaning and de-scaling
- Structural repairs
- Excavations
- Root cutting

### [www.edincare.com](http://www.edincare.com)

- Discover our products and services
- Order products online
- Case studies and articles
- Brochures and technical documents

## Protect your property with an Edincare Service Agreement

As with all pumped and drainage systems, regular maintenance is essential to ensure optimum performance and minimal downtime. Our Service Agreements comprises planned preventive maintenance visits at an agreed frequency, we also service other manufacturers' equipment regardless of type, make and age.

- ✓ Validates your building insurance
- ✓ Reduces the risk of failure
- ✓ Increases the life expectancy of your equipment
- ✓ Priority callouts and 24/7 out-of-hours service
- ✓ Reduced rates for emergency call outs
- ✓ Flexible payment options (Direct Debit)



+44 (0)1442 211554  
[info@edincare.com](mailto:info@edincare.com)

[www.edincare.com](http://www.edincare.com)  
[edincarepumps](http://www.edincare.com)

A Tricel Company [www.tricel.ie](http://www.tricel.ie)

Unit 8, Heron Business Park, Eastman Way,  
Hemel Hempstead, Hertfordshire, HP2 7FW



Our policy is one of continuous product improvement, we reserve the right to change specifications and prices without prior notice. All information is given in good faith. No responsibility can be accepted for errors, omissions or incorrect assumptions. © Omni Pump International Ltd t/a Edincare Pumps & Edincare Drains. All rights reserved.