

# Rubber wall seal

Wall Seals are rubber rings with a unique profile, designed to create a watertight seal when pipes pass through chamber walls.

The profile design provides multiple sealing points, excellent resistance to transverse shear loads and allows a high level of angular deflection in the joint.

## KEY FEATURES

- High performance and effective seals
- Quick and easy installation
- Cost effective
- Solutions for various pipe materials and outside diameters
- Complies with BS EN 681-1:1996

50 mm



#17012

110 mm

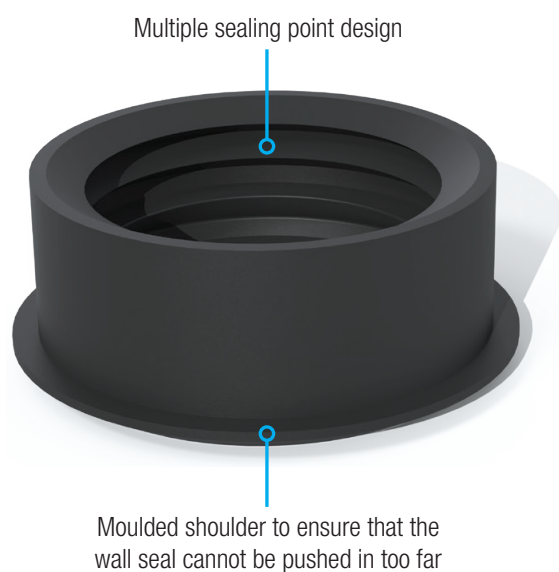


#17010

160 mm



#17011



Suitable for a wide range of chamber types including polyethylene, GRP and pre-cast concrete.

## WASTE TYPE



Foul



Grey



Ground



Surface



Storm

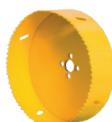
## RECOMMENDED ACCESSORIES

Hole cutter, 76 mm  
(for 50 mm rubber  
wall seal)



#17024

Hole cutter, 140 mm  
(for 110 mm rubber  
wall seal)



#17025

Hole cutter, 177 mm  
(for 160 mm rubber  
wall seal)



#17026

## MATERIAL SPECIFICATION

All sizes	
Material	EPDM (Nitrile on request)
Material hardness	40±5 IRHD
Pressure rating	0.5bar, 7.25psi
Temperature range	50°C to 80°C constant, 100°C intermittent
Standard	BS EN 681-1:1996

## DELIVERING PUMPED AND DRAINAGE SOLUTIONS FOR OVER 25 YEARS

**Packaged pumping stations**

**Waste water pumping systems**

**Macerators and macerating toilets**

**Floor mounted pumping stations**

**Fat, oil and grease separating systems**

**Rainwater harvesting systems**

**Battery backup systems**

**Adoptable pumping stations**

**Submersible pumps**

**Accessories**



We provide pumped and drainage products and services to the public and private sectors, including residential, commercial, hospitality and retail.

We are proud of the long-term relationships we have built with our clients and partners, delivering cost effective, robust and dependable products and services.

### 12-MONTH GUARANTEE

Your products are protected by a 12-month guarantee. Please refer to our Terms and Conditions at [www.edincare.com](http://www.edincare.com)

### HOW TO ORDER

Order online at [www.edincare.com](http://www.edincare.com)  
Call Sales on 01442 211554  
Email [sales@edincare.com](mailto:sales@edincare.com)

### PROJECT SERVICES

- Project design
- Site surveys
- Installations
- Refurbishments

### AFTERSALES SERVICES

- Planned servicing
- Emergency call outs
- Commissioning
- Monitoring

### DRAINAGE SERVICES

- Tankering
- Jetting
- Drainage CCTV
- Surveys
- Cleaning and de-scaling
- Structural repairs
- Excavations
- Root cutting

### [www.edincare.com](http://www.edincare.com)

- Discover our products and services
- Order products online
- Case studies and articles
- Brochures and technical documents

## Protect your property with an Edincare Service Agreement

As with all pumped and drainage systems, regular maintenance is essential to ensure optimum performance and minimal downtime. Our Service Agreements comprises planned preventive maintenance visits at an agreed frequency, we also service other manufacturers' equipment regardless of type, make and age.

- ✓ Validates your building insurance
- ✓ Reduces the risk of failure
- ✓ Increases the life expectancy of your equipment
- ✓ Priority callouts and 24/7 out-of-hours service
- ✓ Reduced rates for emergency call outs
- ✓ Flexible payment options (Direct Debit)



+44 (0)1442 211554  
[info@edincare.com](mailto:info@edincare.com)

[www.edincare.com](http://www.edincare.com)  
edincarepumps

Unit 8, Heron Business Park, Eastman Way,  
Hemel Hempstead, Hertfordshire, HP2 7FW

Part of the Edincare Group of Companies [www.edincaregroup.com](http://www.edincaregroup.com)



Our policy is one of continuous product improvement, we reserve the right to change specifications and prices without prior notice. All information is given in good faith. No responsibility can be accepted for errors, omissions or incorrect assumptions. © Omni Pump International Ltd t/a Edincare Pumps & Edincare Drains. All rights reserved.