

# Magna900Pro (Vortex Model)

The Magna900Pro (Vortex Model) fully automatic packaged pumping station is suitable for pumping grey and foul water to a higher level when gravity drainage is not possible and/or economical to install.

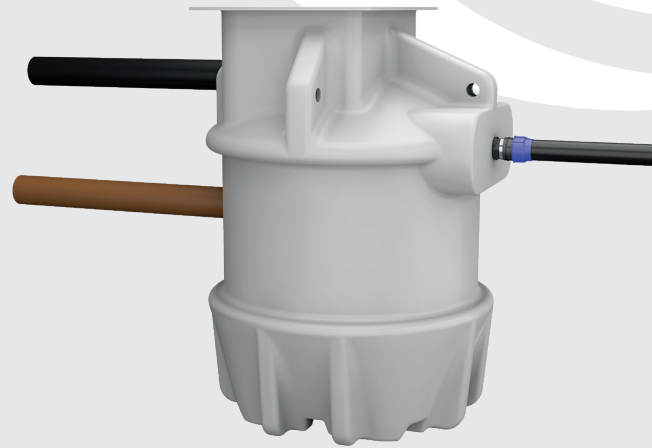
The system provides 900 litre storage capacity, ideal for accepting waste from an extension, outbuilding, basement or similar. The pump's vortex impellor provides reliable and effective pumping of grey and foul water.

The system consists of a polyethylene chamber, locking access cover, internal pipework and fittings, control panel, float switches, one submersible pump with vortex impellers, and external compression adaptor.

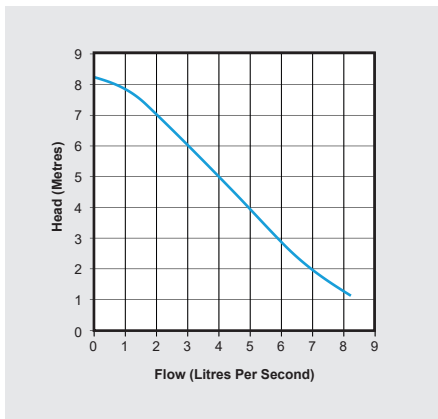
It is easy to install as inlets can be positioned to your requirements (inlet information to be supplied at time of order).

## KEY FEATURES

- The pump's vortex impellor allows for high flow rates
- 900 litres storage capacity
- 60° benching
- Compact chamber for limited space installations
- Ideal for an extension, outbuilding, basement or similar
- Variable inlet positions
- A range of alarms and remote alerts are available offering peace of mind
- Easy to install

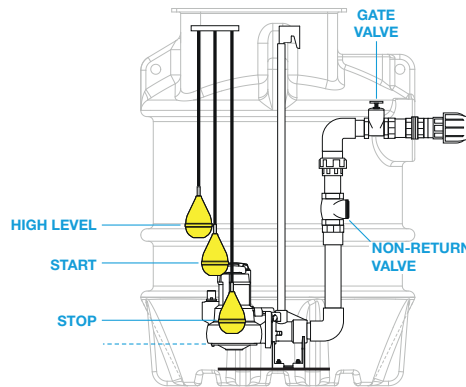


## PUMP CURVE



## DIMENSIONS (mm)

CHAMBER	Height	Diameter	
Magna900Pro	1500	1100	
ACCESS COVER	Width	Length	Depth
Clear opening	600	750	-
including frame	710	860	35
CONTROL PANEL	Height	Width	Depth
Enclosure	380	300	180



## TECHNICAL DATA

CHAMBER		
Internal pipework	2.5" (63 mm) OD PVC	
Discharge pipework	90 mm OD HDPE	
Lifting eyes	4no	
Capacity	900 litres	
Chamber material	Tank grade polyethylene	
Chamber colour	White	
PUMP	1-phase	3-phase
Number of pumps	1	1
Impeller type	Vortex	Vortex
Power supply	230 V	415 V
Rated current	6.0 A	2.8 A
Motor rating	750 W	750 W
Revolutions per minute	2900	2900
Max. vertical output	8.2 m	8.2 m
Max. flow rate	8.2 l/s	8.2 l/s
Free passage	60 mm	60 mm
Max. liquid temperature	<40 °C	<40 °C
Cable length	10 m	10m
ACCESS COVER		
Material	Galvanised steel	
Loading	Solid Top, PP Frame, (Facta AA)	
Locking	Yes	
CONTROL PANEL	1-phase	3-phase
Material	Plastic	Plastic
Volt free contact	No	No
Voltage	240 V	415 V
Volted contact	24 V	24 V
LEVEL CONTROLS		
Type	Sewage float	
Material	Polyethylene	
Cable length	10m	

## SUITABLE FOR



Below ground    New build    Retro-fit

## WASTE TYPE



Grey    Foul    Surface    Storm

## OPTIONAL EXTRAS



Pumps    Control equipment    Battery backup    Pipework (external)    Monitoring    Level controls    Access covers    Kiosks

All our products can be customised to your requirements. For more information on this please contact our sales team on 01442 211554.

# DELIVERING PUMPED AND DRAINAGE SOLUTIONS FOR OVER 25 YEARS

- Packaged pumping stations**
- Waste water pumping systems**
- Macerators and macerating toilets**
- Floor mounted pumping stations**
- Fat, oil and grease separating systems**
- Rainwater harvesting systems**
- Battery backup systems**
- Adoptable pumping stations**
- Submersible pumps**
- Accessories**



We provide pumped and drainage products and services to the public and private sectors, including residential, commercial, hospitality and retail.

We are proud of the long-term relationships we have built with our clients and partners, delivering cost effective, robust and dependable products and services.

### 12-MONTH GUARANTEE

Your products are protected by a 12-month guarantee. Please refer to our Terms and Conditions at [www.edincare.com](http://www.edincare.com)

### HOW TO ORDER

Order online at [www.edincare.com](http://www.edincare.com)  
 Call Sales on 01442 211554  
 Email [sales@edincare.com](mailto:sales@edincare.com)

### PROJECT SERVICES

- Project design
- Site surveys
- Installations
- Refurbishments

### AFTERSALES SERVICES

- Planned servicing
- Emergency call outs
- Commissioning
- Monitoring

### DRAINAGE SERVICES

- Tankering
- Jetting
- Drainage CCTV
- Surveys
- Cleaning and de-scaling
- Structural repairs
- Excavations
- Root cutting

### [www.edincare.com](http://www.edincare.com)

- Discover our products and services
- Order products online
- Case studies and articles
- Brochures and technical documents

## Protect your property with an Edincare Service Agreement

As with all pumped and drainage systems, regular maintenance is essential to ensure optimum performance and minimal downtime. Our Service Agreements comprises planned preventive maintenance visits at an agreed frequency, we also service other manufacturers' equipment regardless of type, make and age.

- ✓ Validates your building insurance
- ✓ Reduces the risk of failure
- ✓ Increases the life expectancy of your equipment
- ✓ Priority callouts and 24/7 out-of-hours service
- ✓ Reduced rates for emergency call outs
- ✓ Flexible payment options (Direct Debit)



+44 (0)1442 211554  
[info@edincare.com](mailto:info@edincare.com)

[www.edincare.com](http://www.edincare.com)  
[edincarepumps](https://www.linkedin.com/company/edincarepumps)

Unit 8, Heron Business Park, Eastman Way,  
 Hemel Hempstead, Hertfordshire, HP2 7FW

Part of the Edincare Group of Companies [www.edincaregroup.com](http://www.edincaregroup.com)



Our policy is one of continuous product improvement, we reserve the right to change specifications and prices without prior notice. All information is given in good faith. No responsibility can be accepted for errors, omissions or incorrect assumptions. © Omni Pump International Ltd t/a Edincare Pumps & Edincare Drains. All rights reserved.