

AutoFlushSS

The AutoFlush SS fully automatic pumping station suitable for pumping grey water to a higher level when gravity drainage is not possible and/or economical to install. The system is supplied in a polished stainless steel chamber offering easy maintenance and an attractive finish.

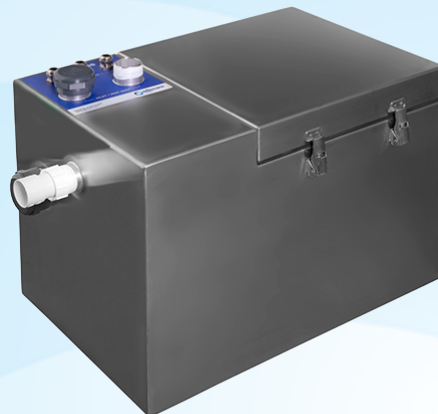
The system is offered with a 90 litre storage capacity. The steel chamber is ideal for the catering industry, and for accepting waste from utility sinks, wash basins, tea points or similar. Utilising Edincare's 'OpenFlow' impellor technology the pump discharges through small bore pipe work for installation through busy service voids and roof spaces.

The system consists of a sealed stainless steel chamber, internal pipe work and fittings, automatic 'OpenFlow' submersible pump and threaded outlet connection.

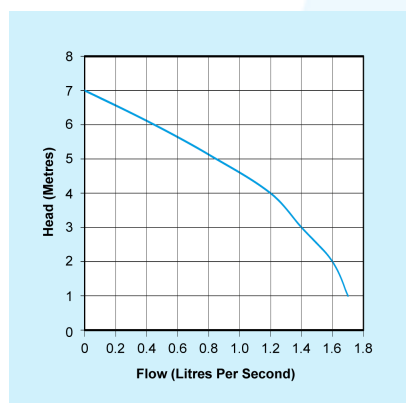
The AutoFlush SS is supplied with fixed connections – contact our sales team for a technical drawing.

KEY FEATURES

- High grade stainless steel chamber offers attractive finish and easy maintenance
- Edincare 'OpenFlow' technology offers pumping of waste water through small bore pipes
- Tank is easy to clean so ideal for the catering industry.
- A range of control panels, alarms and remote alerts are available offering peace of mind to the end user



PUMP CURVE



DIMENSIONS

CHAMBER	LENGTH	WIDTH	HEIGHT
	600mm	400mm	450mm

WEIGHT

TOTAL BOXED WEIGHT
TBC KG

TECHNICAL SPECIFICATION

CHAMBER	
Colour	Silver
Material	Stainless steel
Capacity	90 l
Lifting eyes	No
Discharge size	32mm

PUMP	
No. of pumps	1
Pump type	Vortex
Power supply	1 PHASE
Rated current	1.4A
Motor rating	200W
Revolutions per min.	2720rpm
Max. vertical	7m
Max. flow rate	1.7 l/sec
Frequency	50 Hz
Max liquid temp.	<40°C
Cable length	3m

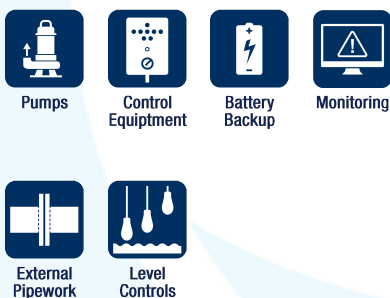
SUITABLE FOR



WASTE TYPE



OPTIONAL EXTRAS



All our products can be customised to your requirements. For more information on this please contact our Sales Team on **01442 211554**.

PROJECTS

SITE SURVEYS

We offer no obligation On Site Surveys and Inspections of pumping schemes for refurbishment, installations, servicing, insurance assessment and general feasibility studies.

Our team of experienced Project Coordinators will survey your site to fully assess the specific requirements of your pumping scheme. Our Project Team will work with you to manage the process from start to finish.

The pumping scheme will be fully inspected mechanically, electrically and for operational capability with a full report of our findings, recommendations and quotation supplied.

PROJECT DESIGN

We offer a full in-house design service working from either site drawings, or where appropriate, undertake no obligation On Site Surveys.

Our Project Team will produce a detailed technical specification and quotation considering all technical parameters (application, location, flow rate, medium type, electrical supply plus ensure it adheres with current regulations).

Our Project Coordinators are trained in all technical aspects to ensure that the most cost effective and efficient solution is offered.

INSTALLATIONS

Our services range from the installation of new control equipment, submersible pumps through to full pump station refurbishments.

Customers can simply assign the responsibility for the installation to our Project Team knowing that our team of experienced Project Coordinators and Service Engineers will complete the installation on time and within budget.

Upon completion a handover service is offered where our technical representative will attend site and conduct an onsite demonstration of the equipment.

APPLICATION



AFTER SALES

We offer a comprehensive range of after sales services that include:

- Planned servicing
- Emergency call-outs
- Commissioning
- Monitoring
- Tankering and Jetting

Our engineers are fully trained in all aspects of working with pumped drainage systems, as well as being specifically trained in the use of gas detection equipment, confined space entry procedures and all relevant health and safety legislation.

Please contact our aftersales department on 01442 211554 for further information.

MAINTENANCE

The product should be inspected every three months.

A full visual inspection should be undertaken to the product to assess its overall condition, this must include all electrical and mechanical components.

In addition to the above it is important that the product undergoes regular servicing. As with all systems of this nature, regular maintenance is essential to ensure the system operates at its optimum level and fulfils its expected lifespan. The product must be maintained at intervals of:

Once per annum - Single residential dwelling
Twice per annum - Single residential dwelling where there is a risk of flooding as a result of product failure (for example, basement applications) & Multiple residential dwellings
Four times per annum - Commercial premises

HEALTH & SAFETY

Edincare Pumps are registered with British Safety Council, Constructionline, Safe Contractor, CHAS, ISO, Basement Waterproofing Association, PCA, FORS & NICEIC demonstrating our commitment to Health and Safety and our quality of workmanship.

DELIVERING PUMPED SOLUTIONS NATIONWIDE

Edincare Pumps has been established for over 25 years specializing in the manufacture, project design, sale, commission, service and repair of pumped drainage solutions.


OUR PRODUCT RANGE

- Packaged pumping stations
- Waste water pumping systems
- Macerators & macerating toilets
- Floor mounted pumping stations
- Fat, oil & grease separating systems
- Rainwater harvesting systems
- Battery Backup Systems
- Adoptable Pumping Stations

CHOOSE WITH CONFIDENCE

-  1 year guarantee
-  Service agreement
-  Commissioning
-  Availability

WWW.EDINCARE.COM ...

-  Installation guide
-  Technical drawing
-  BIM drawing
-  NBS Specification
-  Catalogue